

State of Rhode Island and Providence Plantations

Fiscal Year 2019 Budget



Volume III – Education

Gina M. Raimondo, Governor

Agency Summary

HISTORICAL PRESERVATION AND HERITAGE COMMISSION

Agency Mission

Identify and protect historic and prehistoric sites, buildings, and districts throughout the State of Rhode Island, and commemorate the history and culture of the State; promote and preserve the State's ethnic and cultural traditions; and provide a better understanding of the various ethnic cultures, which comprise the State's population.

Agency Description

The Rhode Island Historical Preservation and Heritage Commission is the state office for historic preservation and for sponsorship of state heritage activities. It is Rhode Island's only statewide preservation program to identify and protect historic buildings, districts, and archeological sites. The commission is responsible for developing a state historical preservation plan, and for survey and planning activities which provide for in-depth studies of each city and town to identify, evaluate, and record sites, structures, districts, and objects of historical, architectural, cultural, or archeological significance to the State.

The Commission sponsors and/or coordinates heritage festivals, heritage seminars, conferences and symposia, and publishes scholarly and popular works relating to the social, political, and cultural development of the State. It also coordinates programs with other private or public groups or agencies which will meet the cultural needs of Rhode Island's citizens.

The Commission develops and implements programs for the preservation of historic resources. Federal and state projects are reviewed by the Commission to assess their effect on specific cultural resources. The Commission administers programs of financial assistance, which include grants, loans, and tax credits for restoration projects. A wide range of information and technical assistance is provided to citizens who own historic properties or are interested in preserving the heritage of their neighborhood and community. The Commission certifies municipal historic district zoning programs, which meet minimum standards, and annually administers funds to these "certified local governments."

Statutory History

Title 42, Chapter 45 of the Rhode Island General Laws established the Rhode Island Historical Preservation Commission and defined the duties of the Executive Director and commission members. Executive Order Number 10, issued July 1, 1977, initially created the Heritage Commission. In 1981, the General Assembly enacted Title 42, Chapter 79 of the Rhode Island General Laws establishing the commission as a permanent state agency. In the 1994 legislative session the General Assembly repealed Title 42, Chapter 79 and amended Title 42, Chapter 45 to add Heritage Commission responsibilities creating the Rhode Island Historical Preservation and Heritage Commission.

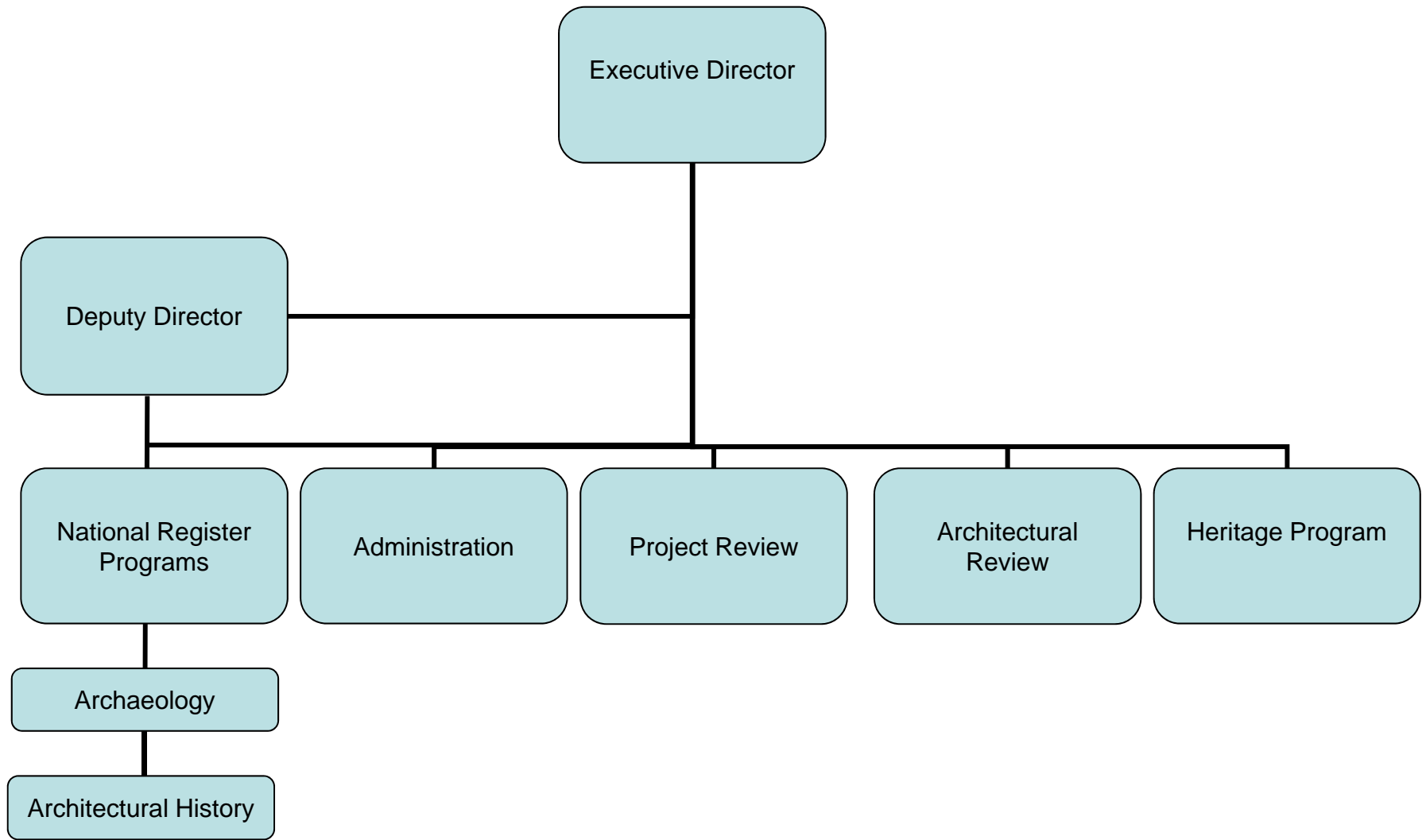
Budget

HISTORICAL PRESERVATION AND HERITAGE COMMISSION

	2016 Actuals	2017 Actuals	2018 Enacted Budget	2018 Revised Budget	2019 Recommended
Expenditures by Program					
Central Management	2,972,449	2,666,742	2,490,767	2,612,478	2,586,290
Total Expenditures	2,972,449	2,666,742	2,490,767	2,612,478	2,586,290
Expenditures by Object					
Salary And Benefits	1,662,728	1,665,685	1,644,208	1,556,370	1,660,871
Contract Professional Services	3,163	14,559	0	0	0
Operating Supplies And Expenses	90,111	83,015	61,166	153,728	156,191
Assistance And Grants	1,090,752	899,435	784,393	901,380	768,228
Subtotal: Operating	2,846,754	2,662,694	2,489,767	2,611,478	2,585,290
Capital Purchases And Equipment	125,695	4,048	1,000	1,000	1,000
Subtotal: Other	125,695	4,048	1,000	1,000	1,000
Total Expenditures	2,972,449	2,666,742	2,490,767	2,612,478	2,586,290
Expenditures by Source of Funds					
General Revenue	1,362,860	1,131,750	1,121,134	1,123,154	1,187,291
Federal Funds	1,283,096	1,427,273	860,963	976,203	851,540
Restricted Receipts	126,202	27,987	427,700	432,151	465,870
Operating Transfers From Other Funds	125,000	0	0	0	0
Other Funds	75,291	79,732	80,970	80,970	81,589
Total Expenditures	2,972,449	2,666,742	2,490,767	2,612,478	2,586,290
FTE Authorization	16.6	15.6	15.6	15.6	15.6

The Agency

Historical Preservation and Heritage Commission



Performance Measures

HISTORICAL PRESERVATION AND HERITAGE COMMISSION

National Register of Historic Places (NRHP) Nominations

The Rhode Island Historical Preservation & Heritage Commission (HPHC) documents and nominates historic structures and archaeological sites to the NRHP, the official list of properties that possess historical significance and are worthy of preservation. Properties entered on the NRHP become eligible for the benefits of HPHC programs. The figures below represent the number of properties nominated to the NRHP. [Note: Missing values appear as zeros in the measure.]

<i>Frequency: Quarterly</i>	<i>Reporting Period: State Fiscal Year</i>				
	2015	2016	2017	2018	2019
Target	232.00	158.00	232.00	232.00	282.00
Actual	232.00	161.00	282.00	0.00	

Architectural Reviews

HPHC architects oversee the programs that provide financial assistance to projects to rehabilitate historic buildings and leverage private investment. This program preserves historic buildings by adapting them for new use and helps revitalize communities. HPHC conducts architectural reviews in three phases: Phase I certifies the historical significance of a project; Phase II certifies the rehabilitation plan; and Phase III certifies project completion. The figures below represent the number of architectural reviews conducted in a given year. [Note: Missing values appear as zeros in the measure.]

<i>Frequency: Quarterly</i>	<i>Reporting Period: State Fiscal Year</i>				
	2015	2016	2017	2018	2019
Target	40.00	65.00	40.00	40.00	27.00
Actual	40.00	73.00	27.00	0.00	

Architectural Review - Investment

The figures below represent the dollar value of investment of historic preservation projects that complete HPHC's Phase III architectural review (i.e., completed projects). [Note: Missing values appear as zeros in the measure.]

<i>Frequency: Quarterly</i>	<i>Reporting Period: State Fiscal Year</i>				
	2015	2016	2017	2018	2019
Target	111,770,000.00	42,560,000.00	111,770,000.00	111,770,000.00	323,003,291.00
Actual	111,770,000.00	416,250,000.00	323,003,291.00	0.00	

Heritage Program Attendance

The HPHC Heritage program works with ethnic subcommittee members to document, support and celebrate the diverse cultural heritage of Rhode Island's people through publications and events. The figures below represent the number of people who participate in Heritage programs each year. [Note: Missing values appear as zeros in the measure.]

<i>Frequency: Quarterly</i>	<i>Reporting Period: State Fiscal Year</i>				
	2015	2016	2017	2018	2019
Target	55,700.00	50,700.00	55,700.00	55,700.00	50,475.00
Actual	55,700.00	47,950.00	50,475.00	0.00	

Personnel

Agency: HISTORICAL PRESERVATION AND HERITAGE COMMISSION

Central Management

	FY 2018		FY 2019	
	FTE	Cost	FTE	Cost
Classified				
DATA CONTROL CLERK	0.6	21,830	0.6	21,830
FISCAL CLERK	1.0	45,492	1.0	45,492
HERITAGE COMMISSION AIDE	1.0	48,732	1.0	48,732
PRINCIPAL HISTORIC PRESERVATION SPECIALIST (ARCH)	1.0	61,993	1.0	61,993
PRINCIPAL HISTORIC PRESERVATION SPECIALIST (ARCH HIST)	2.0	130,185	2.0	130,185
PRINCIPAL HISTORIC PRESERVATION SPECIALIST (GRANTS MGR)	1.0	71,292	1.0	71,292
PRINCIPAL HISTORIC PRESERVATION SPECIALIST (HIST ARCH)	2.0	144,134	2.0	144,134
SENIOR HISTORIC PRESERVATION SPECIALIST (ARCHEOLOGIST)	1.0	63,145	1.0	63,145
SENIOR HISTORIC PRESERVATION SPECIALIST (ARCH HIST)	1.0	54,681	1.0	54,909
SENIOR HISTORIC PRESERVATION SPECIALIST (GRANTS MGR)	1.0	54,909	1.0	54,909
SENIOR HISTORIC PRESERVATION SPECIALIST (HISTORIAN)	2.0	107,315	2.0	108,229
SUPERVISING HISTORIC PRESERVATION SPECIALIST	1.0	86,701	1.0	76,899
Subtotal Classified	14.6	890,409	14.6	881,749
Unclassified				
EXECUTIVE DIRECTOR (RI HISTORIC PRES & HERITAGE COMM)	1.0	109,370	1.0	88,798
Subtotal Unclassified	1.0	109,370	1.0	88,798
Subtotal	15.6	999,779	15.6	970,547
Turnover		(53,075)		0
Total Salaries		946,704		970,547
Benefits				
FICA		71,733		74,246
Health Benefits		198,164		243,127
Payroll Accrual		5,117		5,573
Retiree Health		54,008		58,038
Retirement		240,916		264,695
Subtotal		569,938		645,679
Total Salaries and Benefits	15.6	1,516,642	15.6	1,616,226
Cost Per FTE Position (Excluding Temp. and Seasonal)		97,221		103,604.23

Personnel

Agency: HISTORICAL PRESERVATION AND HERITAGE COMMISSION

Central Management

	FY 2018		FY 2019	
	FTE	Cost	FTE	Cost
Statewide Benefit Assessment		39,728		44,645
Payroll Costs	15.6	1,556,370	15.6	1,660,871
Total Personnel	15.6	1,556,370	15.6	1,660,871
Distribution by Source of Funds				
General Revenue		923,901		985,575
Federal Funds		521,523		530,012
Restricted Receipts		30,351		64,070
Other Funds		80,595		81,214
Total All Funds		1,556,370		1,660,871
